

CERTIFICATE OF LOCATION OF GOVERNMENT CORNER

_____ NORTH QUARTER _____ Corner of Section 34 , Township 105 , Range 39

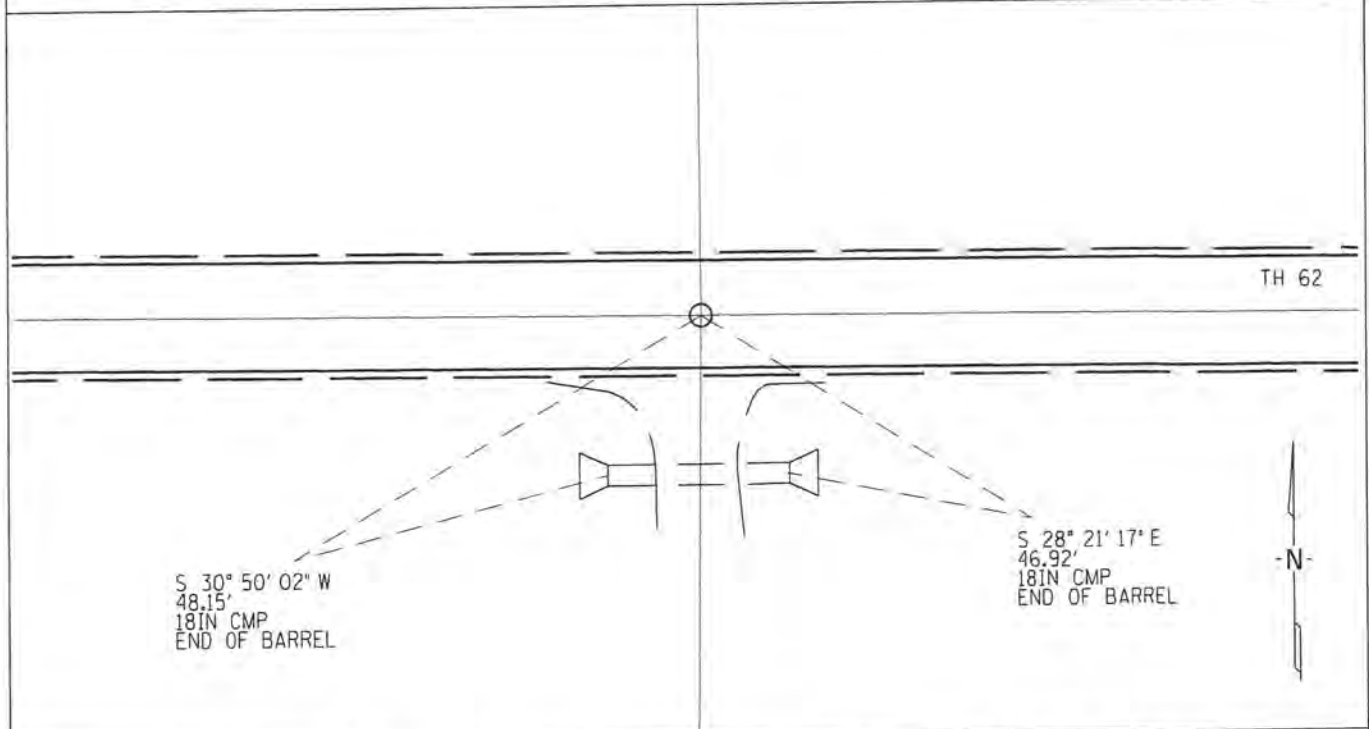
_____ 5TH _____ Principal Meridian, State of Minnesota, County of _____ MURRAY _____

At the corner location shown on the sketch:

On _____ found a 3/4" IRON PIN WAS DESTROYED DURING CONSTRUCTION
DATE

left monument as found lowered monument removed monument (explain)

On 5/15/2014 placed a 1/2" X 18" IRON PIPE WITH RLS CAP 44606
DATE



Statement of evidence for this corner location is on back of this page.

I hereby certify that this survey, plan, or report was prepared by me or under my direct supervision and that I am a duly Licensed Land Surveyor under the Laws of the State of Minnesota.

Signature _____ Date _____ License No. 44606

Title: Land Surveyor Professional Engineer County Surveyor County Engineer

Statement of Evidence: North Quarter Corner of Section 34, Township 105 North, Range 39 West, 5th Principle Meridian, Murray County, Minnesota.

- 1861 This corner originally was set by D. W. Wellman and S. S. Smoot, Deputy Surveyors during the GLO survey which was completed in 1861.
- 1951 January 31, The Minnesota Department of Highways, n/k/a The Minnesota Department of Transportation (MN/DOT) Highway Right of Way Index Map No. 13-66 shows the corner being marked by iron pipe over an in-place stone at P.O.T Sta. 169+11.1.
- 1973 February 7, an unsigned COL assumed to be from MN/DOT shows they found a 3/4" iron pin down 1.5' and left as found. All three ties are 3/4" iron pins with witness posts
- 2011 In December, Sam DeLeo, LS 40341 of Kramer Leas DeLeo, P.C. found a 3/4 inch pin under a PK nail at the location consistent with that described above. Coordinate values were established on the monument using RTK/GPS methods as follows:
Northing 105828.75
Easting 342882.84
Murray County Coordinates.
NAD83 (2007 HARN Adj.)
- 2014 On May 15th, 2014, Kyle Klasen, LS 44606 of WSB and Associates set a 1/2" x 18" iron pipe capped with 44606 after the re-construction of TH 62. The coordinate value of the Corner was obtained from MnDOT, District 7 survey department and established by Mr. DeLeo in December, 2011.